

Price Return Index for 5 Calendar Year

Tracking Difference(跟蹤偏離度)/ Tracking Error(跟蹤誤差)

Tracking Difference (TD) (跟蹤偏離度)

Tracking Difference is the return difference between an ETF and its underlying benchmark/ index over a certain period of time.

Tracking Error (TE) (跟蹤誤差)

Tracking error measures how consistently an ETF follows its benchmark/ index. It is the volatility (measured by standard deviation) of that return difference.

Tracking Difference

As of 29 Jan 2016

Fund Listing Date: 19 Aug 2009

Rolling 1-Year TD: -4.44 %

* TD for calendar year 2015: -5.06%

* TD for calendar year 2014: -4.76%

* TD for calendar year 2013: -3.37%

* TD for calendar year 2012: -7.40%

* TD for calendar year 2011: -1.94%

* TD for calendar year 2010: -0.80%

Tracking Error

As of 29 Jan 2016

Fund Listing Date: 19 Aug 2009

Rolling 1-Year TE: 0.49%

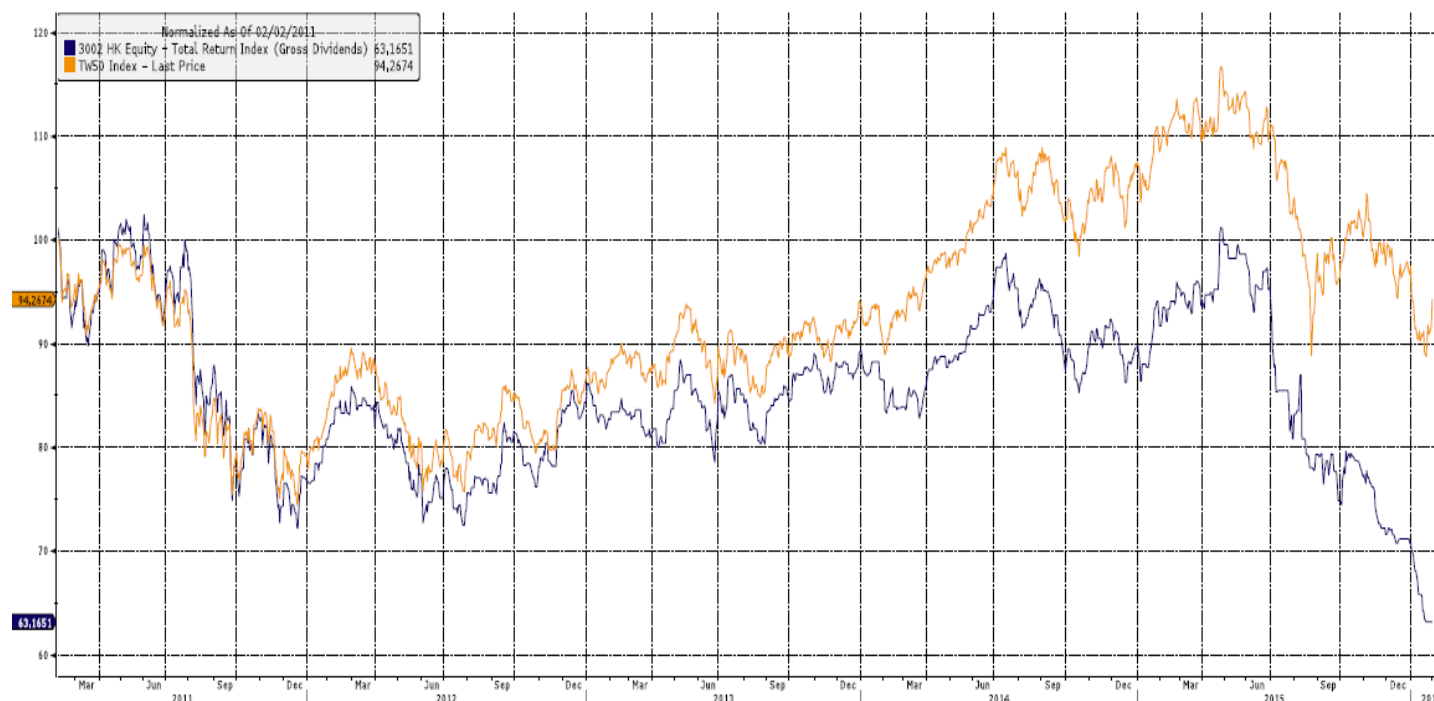
* Annualized based on the number of

dealing days in the past year when daily TD

is calculated

Graph for Tracking Difference

ETF's performance is calculated on an NAV basis without any reinvestment of distributions.



Source: Bloomberg